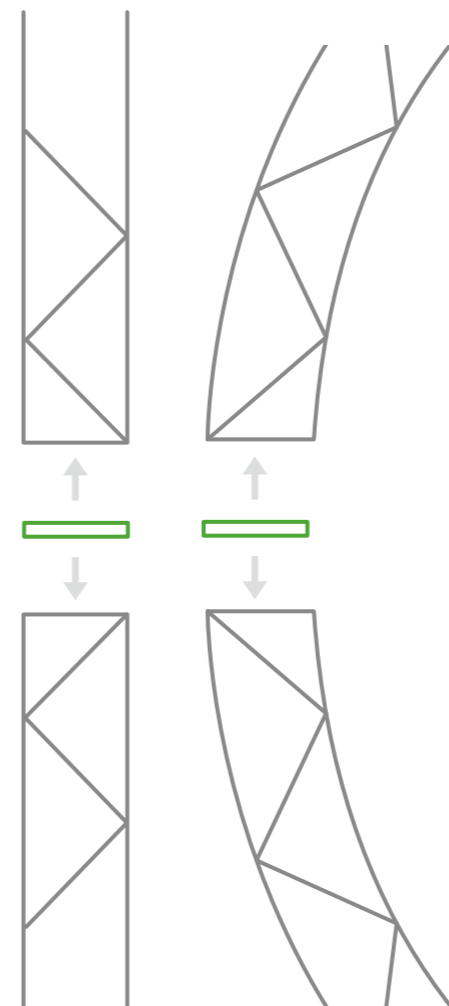
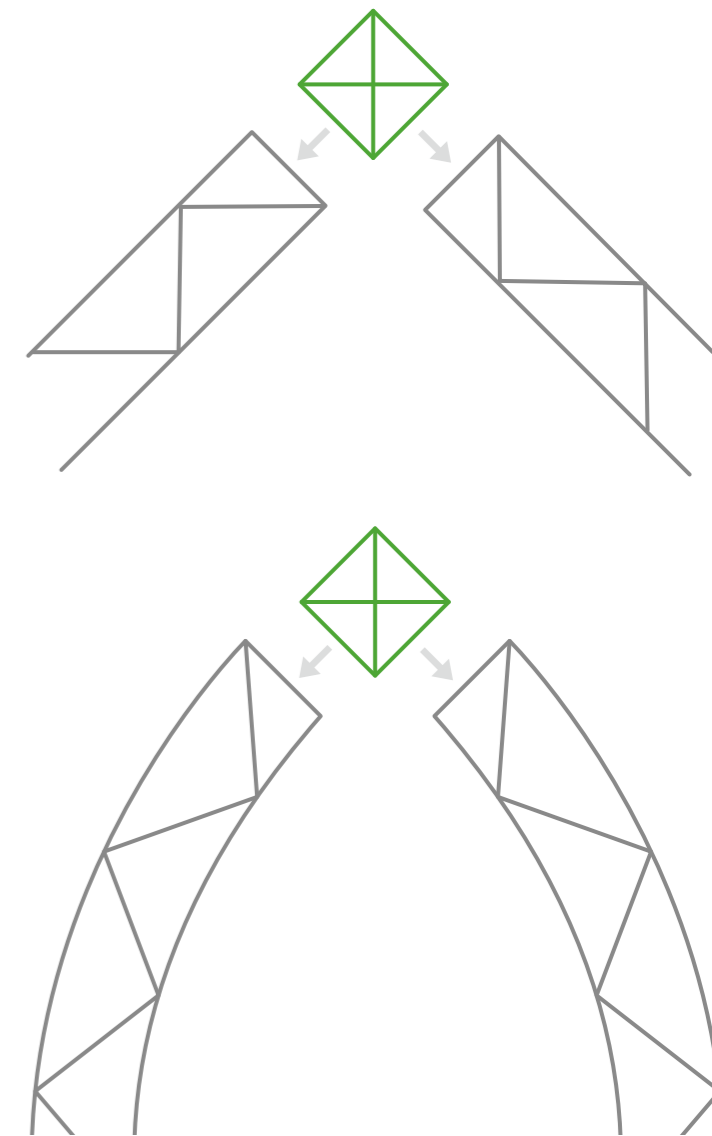


Technical Information

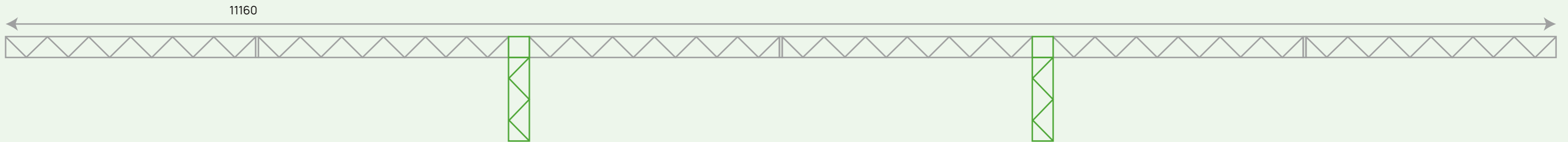
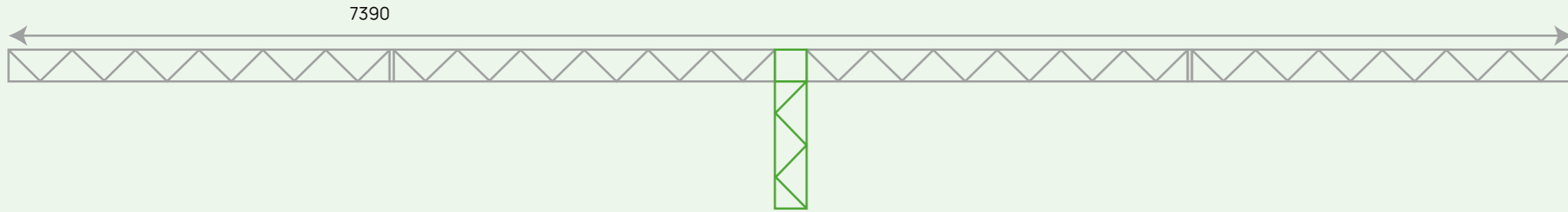
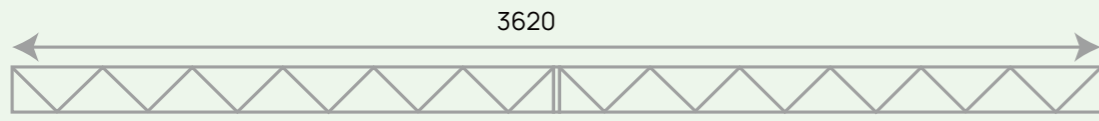


1. Corner block and connecting cross can be used for connection between straight/curved sections, but corner block is preferred



2. The connection of the corner part only can use the corner block to connect

Center distance of truss width / Length = a
Center distance of truss height / Height = b

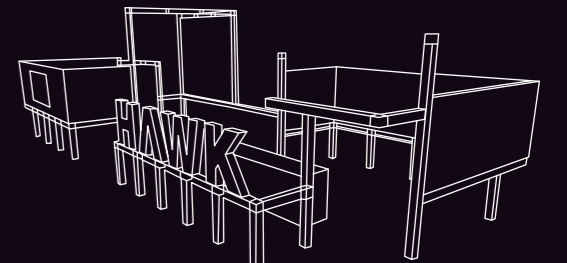
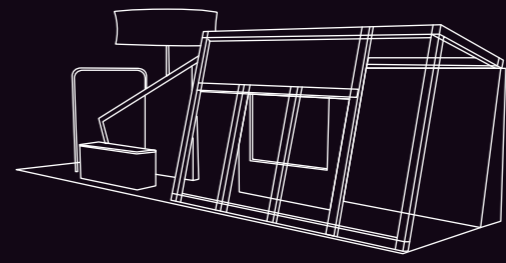
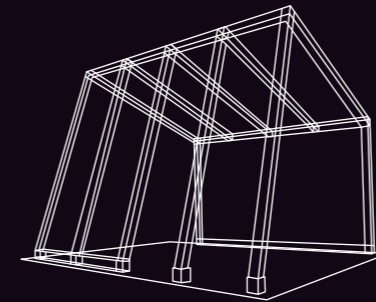
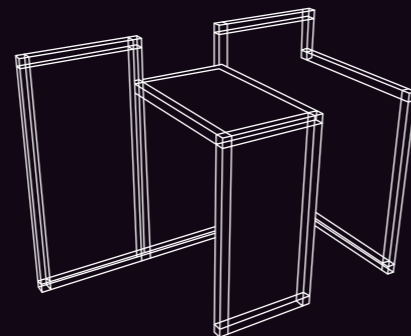
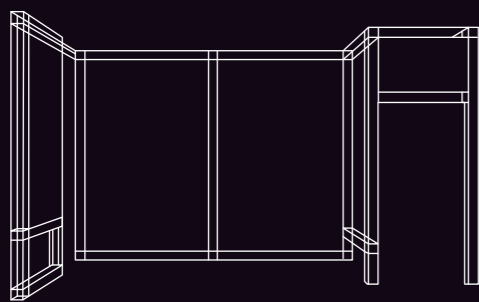
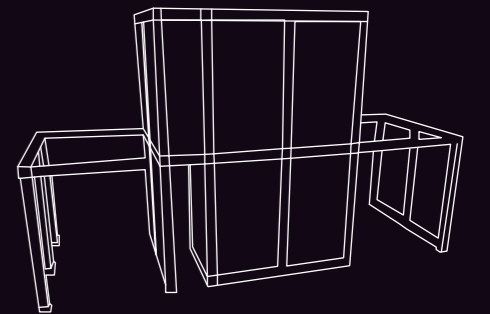
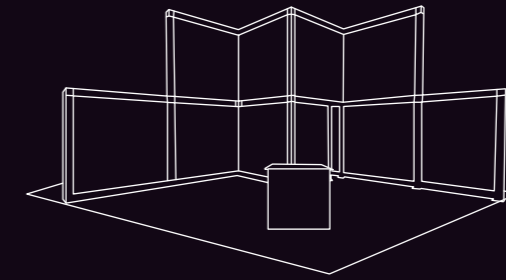
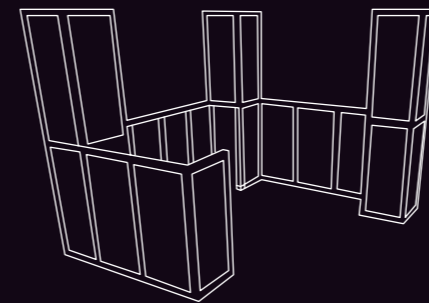
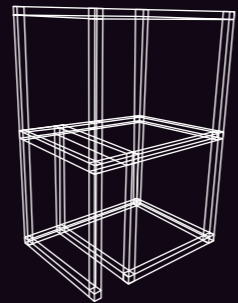
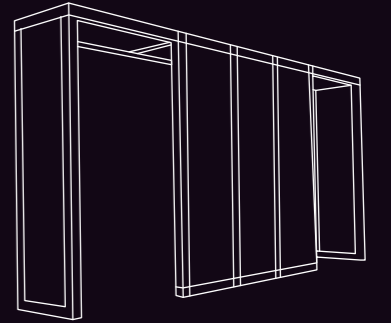
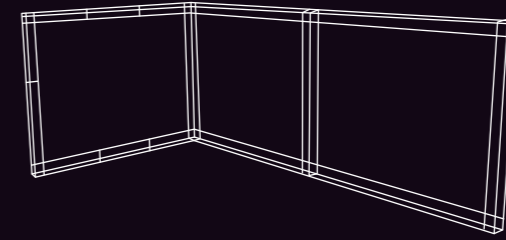
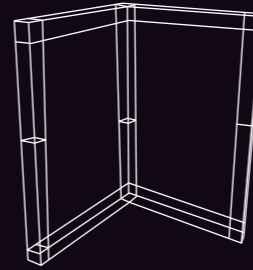
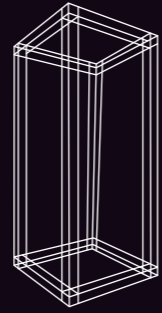
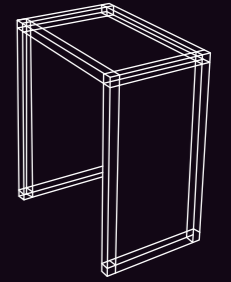
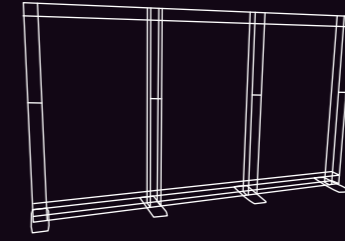
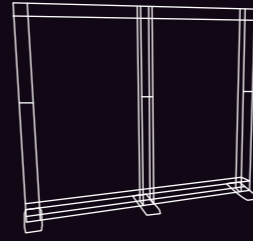
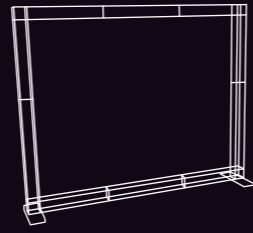
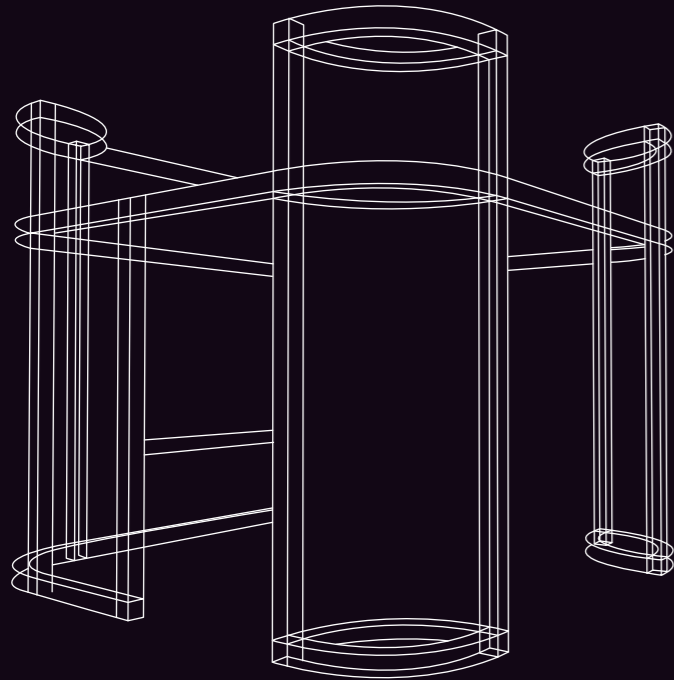


3. When length $a \leq 3620$ mm do not need to connect with corner block or vertical module, $3620 < a \leq 7390$ need to add one corner block and vertical module, $7370 < a \leq 11160$ need to add two corner blocks and vertical module, and so on

4. When height $b \leq 3620$ mm do not need to connect with corner block or vertical module, $3620 < b \leq 7390$ need to add one corner block and vertical module, $7370 < b \leq 11160$ need to add two corner blocks and vertical module, and so on

5. When installing the vertical modules the distance between the left and right sides or the upper and lower sides should be controlled within 1:1.3

Combination method



Classic Case

Booth Solution
18m²

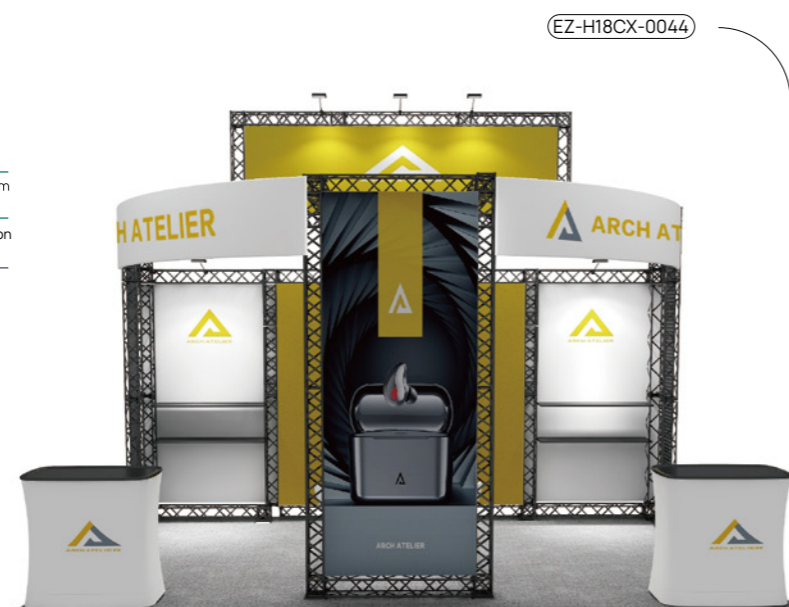


Area/Height 18m² 3.45m

Take time 2 Hours / 2 Person

Configuration

Carpet/ Desks& Chairs/ Lightbox
Tradeshow Counter/ Long Arm LED Light



EZ-H36GS-0010



Booth Solution
36m²



Area/Height 36m² 4.25m

Take time 4 Hours / 2 Person

Configuration

Carpet/ Desks& Chairs
Lightbox/ Monitor System
Tradeshow Counter/ Long Arm LED Light

Booth Solution
54m²



Area/Height 54m² 4.51m

Take time 6 Hours / 4 Person

Configuration

Carpet/ Desks& Chairs/ Lightbox
Tradeshow Counter/ Long Arm LED Light

