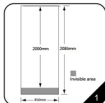


# INSTALLATION STEPS

12 08

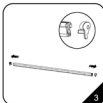
Insert type. Fast and easy to alter graphics. Adjustable spring. Carry cases and spotlights are available as accessories.



1. The visible size of the graphic is 850mm(W) x 2000mm(H).  
The out put size is 850mm(W) x 2005mm(H).



2. The package content:  
a. Installation manual b. Graphic profiles (Top & bottom profile)  
c. 3-sections carrying bag d. Base unit with graphic fixing key.



3. Remove the plastic caps from the top profile.



4. Insert the graphic to the top clip-profile.

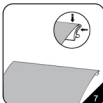
**Caution:** Fabric graphic can't stick firmly as other materials. Thickness should not exceed 5.5mm.



5. Close the lip of the clip-profile to secure the graphic.



6. Insert the plastic caps to both end of the top profile.



7. Peel off the cover sheet of the adhesive on the bottom profile and stick to the back of the graphic.



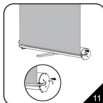
8. Put the 3-Actions pole in position of the base unit.



9. Slide the bottom profile with the graphic to the gap of the base unit.



10. Hook on the plastic at the top end of the 3-Actions pole.



11. Pull out the fixing key to allow the roller run freely so as to fasten the graphic.



12. By rotate the 3-Actions pole clockwise or anticlockwise that can adjust the inclination of the graphic.

**NEXT PAGE**



**CAUTION:**  
PLEASE READ THE INSTRUCTIONS BEFORE INSTALLING PRODUCTS



13. Pull out the fixing key only if you have adjusted the graphic completely. Keep the base unit for changing graphic.



14. If you no need the fixing key, you can put it on the opposite side of the base unit cap.



15. To link up the graphic by using two or more roll-up.

① To more the graphic of roll-up ① & ③ at both end to ensure there is no gap and link together.

## Steps for changing graphic



1 Insert the fixing key to the base unit.



2. Take out the graphic from the hanger of the pole.



3. Slide out the graphic from base unit with the bottom profile.



4. Remove the plastic cap from the top-profile and take out the graphic.



5. Tear out the graphic from the adhesive at the bottom profile.



Then replace the new graphic with the set-up 3-10

### Optional accessories



C-D1/D2/C-D1-LED/C-D2-LED  
Voltage: 110V/220V  
CE certified.  
FIT on all models.  
Color: Black / Silver