

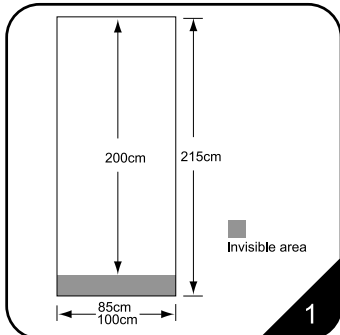
INSTALLATION STEPS

10.09

**Modern appearance, high quality, practical, flexible for multiple uses.
Carry cases and spotlights are available as accessories. Fast and easy to alter graphics.**



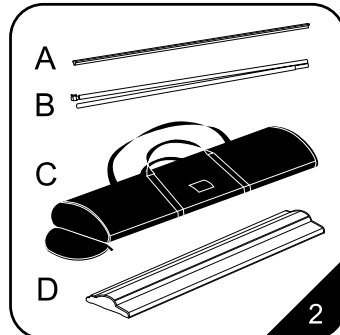
Y-8G



1

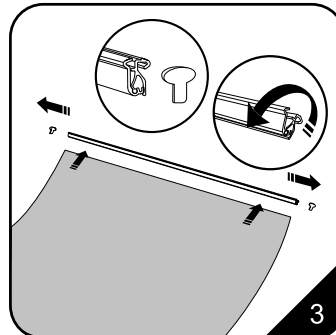
1. The overall width of stand is 85cm or 100cm, height is 215cm, the visible graphic height is 200cm.

⚠ Our size in the Manual is just a reference. Please make the graphic according to your actual purchased size.



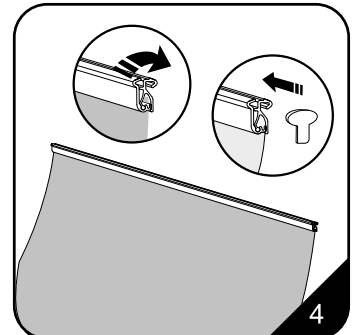
2

2. The case should contain:
Installation instruction
A. Top snap bar B. telescopic pole
C. Black bag D. A base unit



3

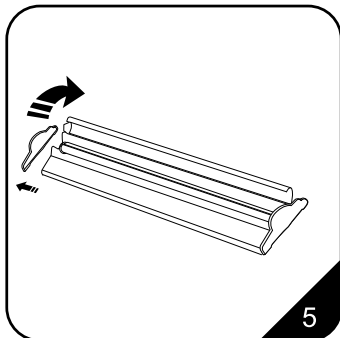
3. Remove the plastic end caps from the top snap bar then open the top snap bar then insert the top edge of the graphic.



4

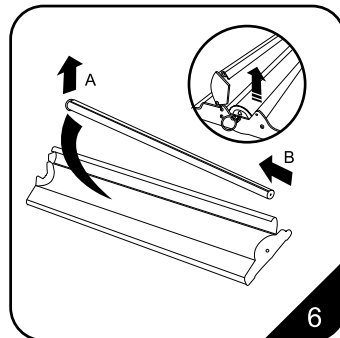
4. Close the snap bar lips to secure the graphic then finish the top by re-attaching the plastic end caps.

⚠ The graphic thickness should be 0.2mm ~ 0.4mm. Double layers for thin material.



5

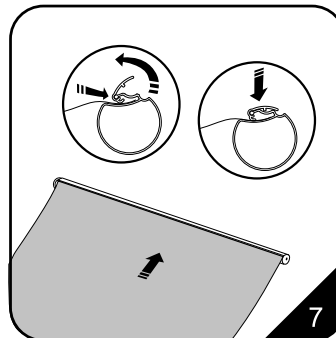
5. Peel off the cover, open the cover of base unit.



6

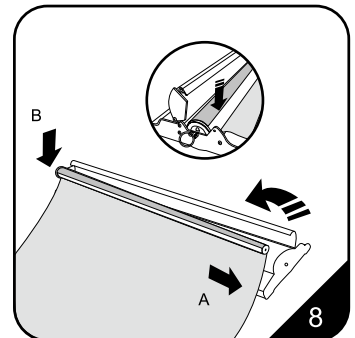
6. Pick up the roller out of the base.

⚠ Don't peel off the key to avoid hurt hands and spring releasing.



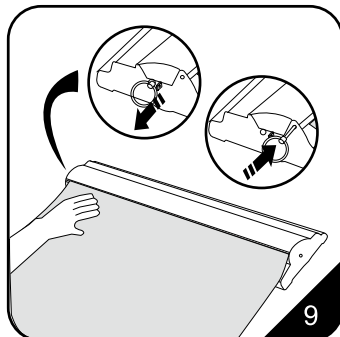
7

7. Open the roller's lip, slide the bottom edge of banner under the lid, close the roller's lip to secure the graphic.



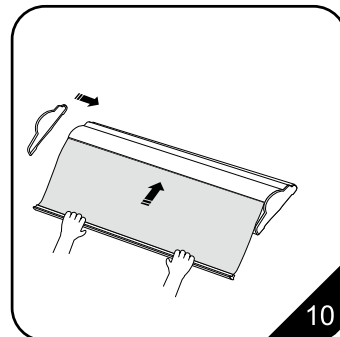
8

8. Put the roller into the base and push it toward one side for fixing. Then close the cover of base unit.



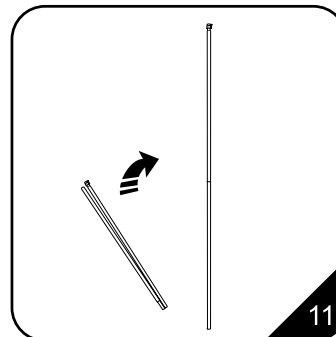
9

9. Carefully pull out the retaining pin, then put it into the another hole to lock the upper cover as per above pic.



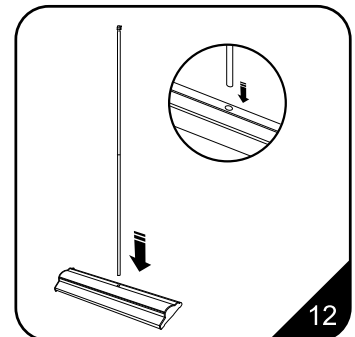
10

10. Carefully allow the banner to recoil into the base unit (it may be useful to have an assistant hold the base steady), then reattach the cover.



11

11. The hooked end corresponds to the top and the round end belongs to the bottom base.



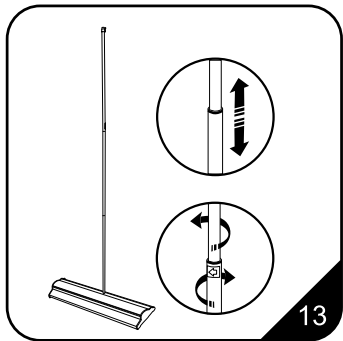
12

12. Insert the assembled pole into the base hole.

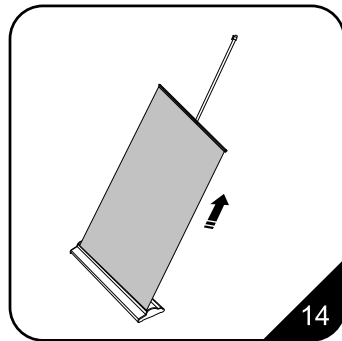
NEXT PAGE



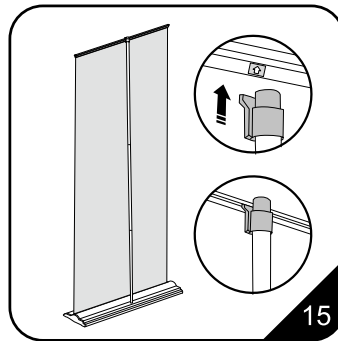
**CAUTION:
PLEASE READ THE INSTRUCTIONS BEFORE INSTALLING PRODUCTS**



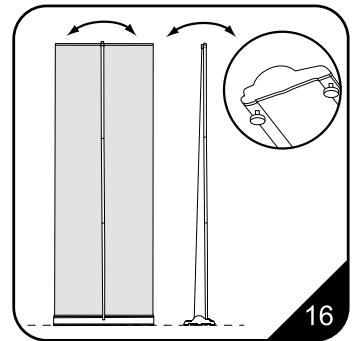
13. Draw out the upper of the telescopic pole to adjust the height to suitable level 160cm~220cm, then circumsgrate to firm it.



14. Pull the graphic completely.

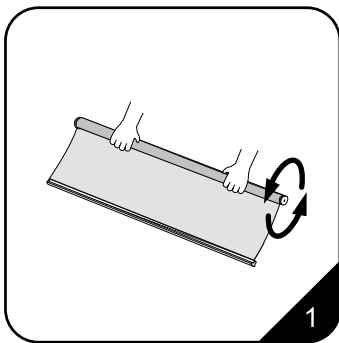


15. The plastic holder at the top of pole slips into the rear slot of the banner beam. A marker on the beam indicates the beam's centre where the pole should be inserted.

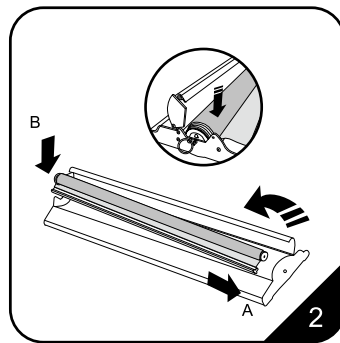


16. The unit can be leveled by adjusting the threaded feet at the bottom of the base unit.

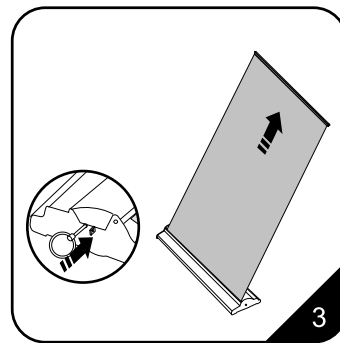
The following steps account for tightening spring when it released.



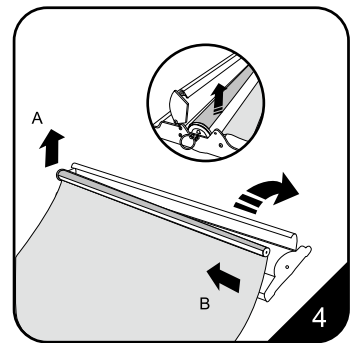
1. Pick up the roller from the base unit then furl the graphic completely.



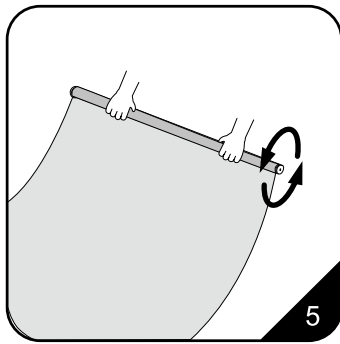
2. Put the roller with graphic into the base unit then close the shell.



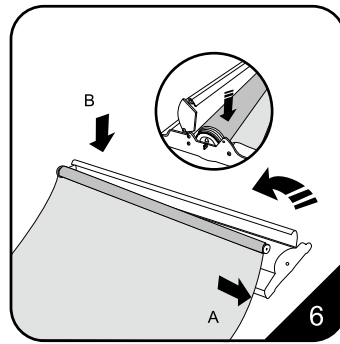
3. Pull the graphic completely then insert the retaining pin into the hole to lock roller.



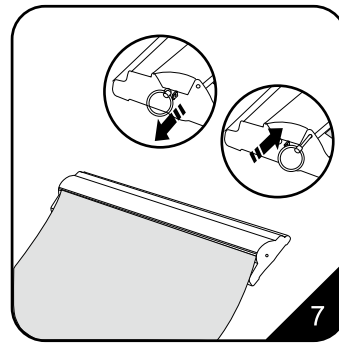
4. Open the shell to pick up the roller.



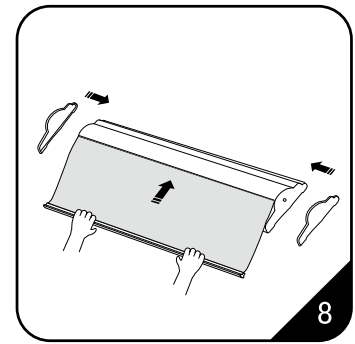
5. Furl graphic manually to your preferred circles.



6. Put the roller with graphic into the base unit then close the shell.

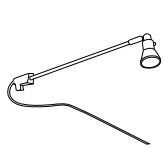


7. Activate the spring tension by removing the Allen key. Pull the Allen key while holding on to the attached graphic. Save the key in the side cover.

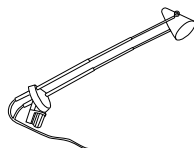


8. Hold the graphic and allow it to recoil into the base unit. Then put the side covers on.

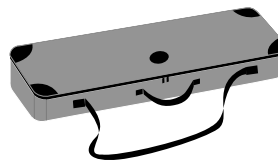
Optional accessories



C-D1/D2/C-D1-LED/C-D2-LED
Voltage: 110V/220V
CE certified.
Fit on all models.
Color: Black / Silver



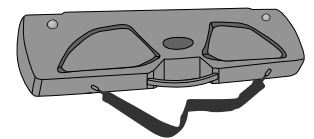
C-D11/D12
Fit on all models.
Color: Black / Silver



C-11-X5
This carry case is able to store all models.



C-11-X10
This carry case is able to store all models.



C-11-X6
This carry case is able to store K-1, Y-1, C-1 and C-3C only.
Color: Grey / Black / Blue
Attention: fit for graphic size 85cm or less