

INSTRUCTION 10.09

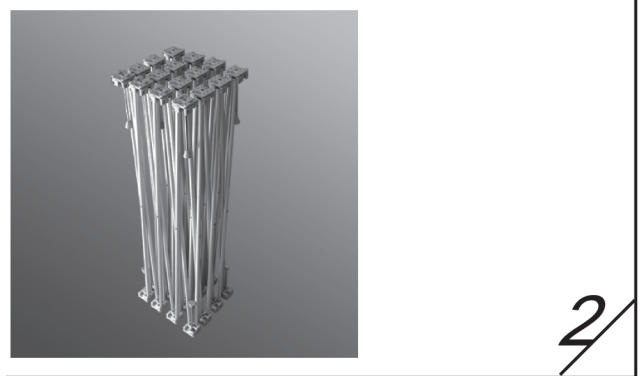
POP UP-11G

Accessory list

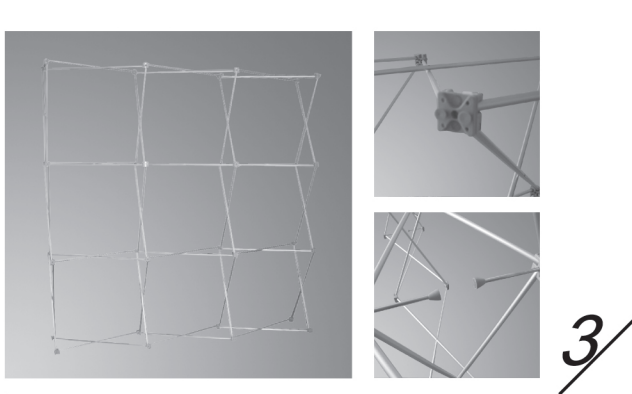
3*3 curved frame,graphic pvc,side graphic pvc,straight magnetic bars,curved manetic bars, side curved bars,magnetic tapes, double glue ,graphic strip,side strip and lamps etc.



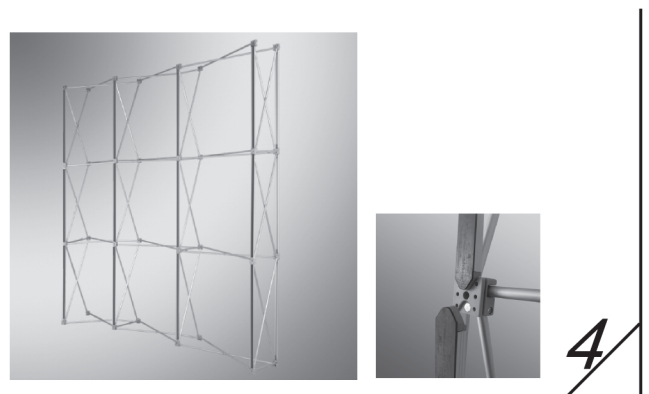
1,The soft case contains 1 frame, PVC boards, magnetic poles and bars ,lights .



2,Pick the frame out of this case.



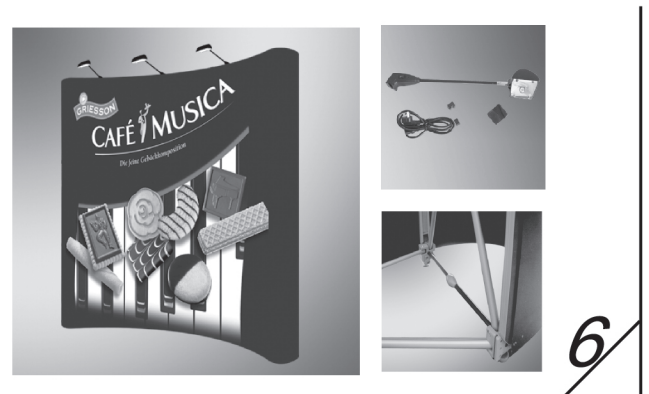
3,Draw the frame completely and connect the maganetic pins together as the pic showing. ps: An assistant is necessary.



4,Join connecting poles together with the frame,by pressing the maganetic tips to the square.



5,Stick the magnetic bars onto the PVC boards which graphic are installed both sides, also the hanging hock like the pic.Then stick together with magnetic bars one by one.Meanwhile hook should hang on as well.

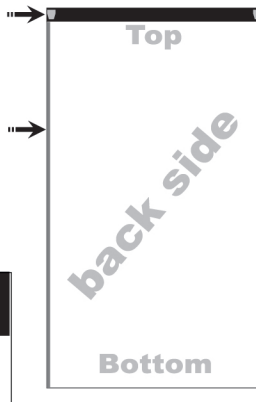


6,The lamps are optional when it has been done.

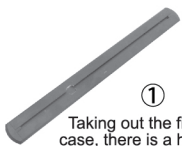
ACCOUNT FOR GRAPHIC & SIDES

HANGING STRIP

MAGNETIC BAR



FIXING FOOT



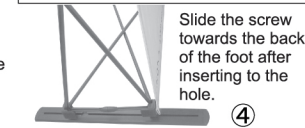
①

Taking out the fixing foot from the case, there is a hole in the slot of the surface. (Remark: To fix the foot with straight popup only)



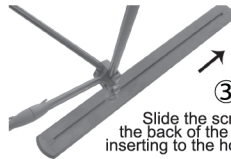
②

Checking the bottom of the popup there is an adjustable screw connected to the frame. Aim at the hole and insert the screw.



④

Slide the screw towards the back of the foot after inserting to the hole.



③

Slide the screw towards the back of the foot after inserting to the hole.

OPTIONAL



horizontal layer



leaning layer

HARD CASE



YC-11-X1

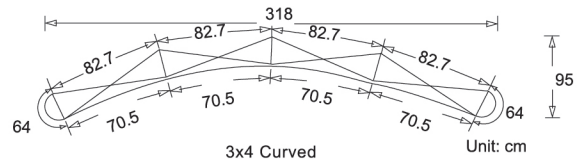
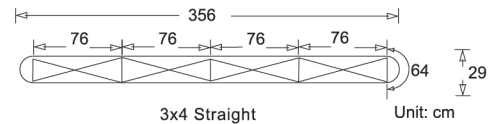
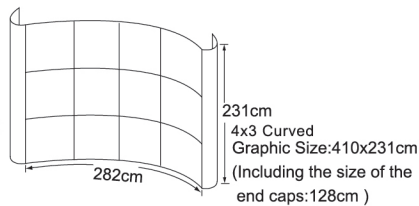
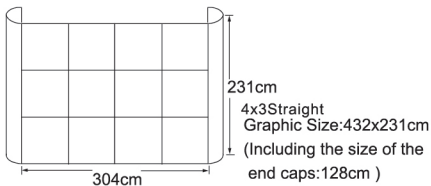
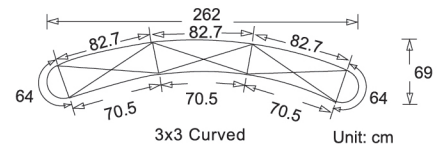
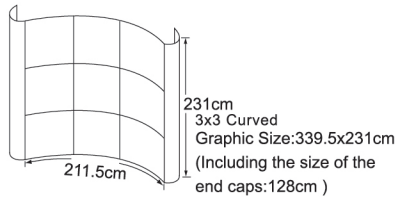
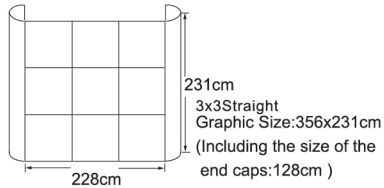
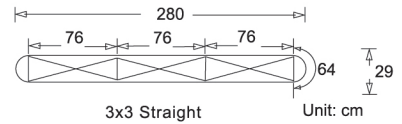
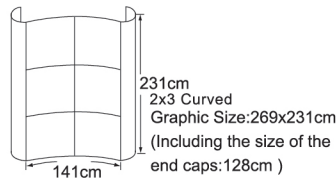
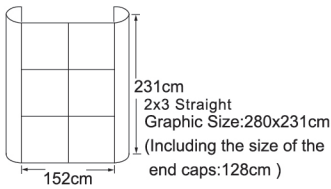


YC-11-X2



YC-11-X4

POP UP skeleton map



SPECIFICATIONS

ModelType	Graphic Size	Net Weight	Package	Gross Weight	Outer Carton Size	Measurement	Color
3x3straight	356x231cm	25.5kg	1pcs	29.0kg	42x45x102cm	0.193m ³	SL
3x3curved	339.5x231cm	25.2kg	1pcs	29.0kg	42x45x102cm	0.193m ³	SL