

INSTALLATION STEPS

K-25

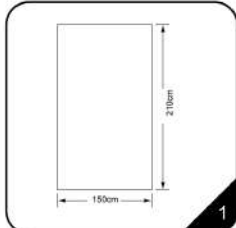
Modern appearance, stable quality, practicability & multiformity
 Package and spotlight are available as accessories

Optional accessories

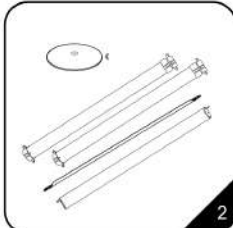


Voltage: 110V, 220V
 We have obtained CE certificate
 Fit for all models.

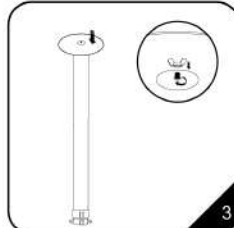
Package



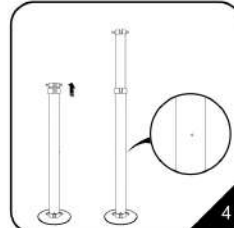
1. The whole graphic is 150cm (wide) and 210cm (high).
 Viewable height on all is 200cm.



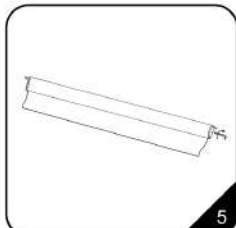
2. The case should contain a base unit, 2 vertical poles, snap-rail and upper banner attaching beam.



3. Twist the special unit then fix it down to the pole



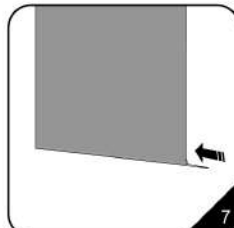
4. Pull out the inside-pole of the vertical pole till the steel-ball could be seen, according to the picture.



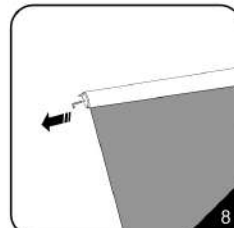
5. Twist the centre pole of the roller with the special tool, according to the picture.



6. Attaching the top of the graphic to the upper banner attaching beam, according to the picture.



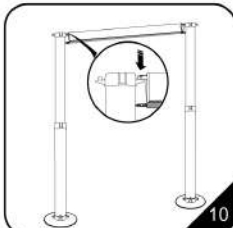
7. Insert the snap-rail into the bottom of the graphic according to the picture.



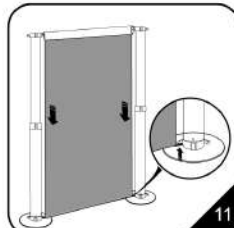
8. Remove the pin out of the other side of the upper attaching beam according to picture.



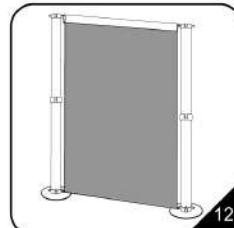
9. Carefully allow the graphic to recoil into the base unit (it may be useful to have an assistant hold the base steady)



10. According to the picture, fix the beam into the vertical pole.



11. pull down the graphic in order to reach the basic unit then make it stable.



12. Finishing setting.

The complicated display pic of HK-25A

